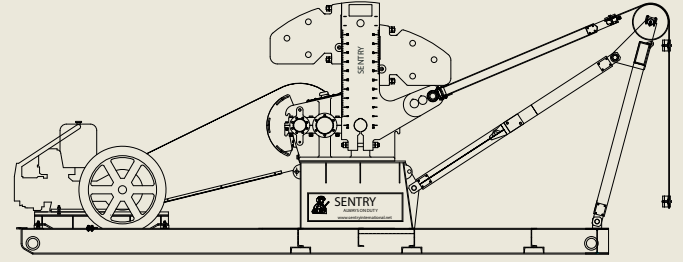


# FLEXLIFT





## Low Profile Pumping Unit

### Main Specifications for FlexLift

		MODEL				
		F114-173-64	F160-173-74	F228-246-86	F320-246-86	F320-256-100
Basic Parameters	Rated polished rod capacity (lbs)	17,300	17,300	24,600	24,600	25,600
	Stroke length (in)	64 / 54 / 44	74 / 64 / 54	86 / 74 / 62	86 / 74 / 62	100 / 86 / 74
	Max stroke frequency (r/min)	12	12	12	12	12
	Balance type	Crank balanced				
	Crank rotate direction	Counterclockwise				
Gear Reducer	Model	114D	160D	228D	320D	320D
	Rated torque (in-lbs)	114,000	160,000	228,000	320,000	320,000
	Gear type	Divided-flow type, two-stage, involute herring-bone gearing				
	Reducing ratio	29.818	28.506	28.873	28.807	28.807
	Center range (in)	25.59	29.53	33.46	37.4	37.4
	Center height (in)	16.93	17.72	19.69	23.23	23.23
	Oil storage quantity (U.S.gal)	29	37	42.8	75	75
	Lubricant	ISO VG 150 gear lubrication oil in winter, ISO VG 220 gear lubrication oil in summer				
	Big pulley diameter (in)	30	36	36	44	44
	Pulley groove type	4C	4C	4C	5C	5C
Balance Assembly	Weight of the crank counterweight (lbs)	1114 × 4	1114 × 4	1767 × 4	1767 × 4	1767 × 4
	Weight of the aux. weight (lbs)	335 × 8	331 × 8	472 × 8	472 × 8	472 × 8
	Weight of crank (lbs)	2,002 × 2	2,242 × 2	3,406 × 2	3,309 × 2	3,731 × 2
	Wrist bore position (in)	32	37	43	43	50
		27	32	37	37	43
		22	27	31	31	37
	Stroke length (in)	64	74	86	86	100
54		64	74	74	86	
44		54	62	62	74	
Belt	Length × Width × Thickness (in)	116.93×14.96×0.394	133.86×14.96×0.394	146.46×20×0.394	146.46×20×0.394	167.52×20×0.394
Fixed type of main base		Cross bars (levers)				
Approx. total weight (lbs) (Ex. prime mover)		26,032	28,292	36,788	39,000	40,029
Overall dimensions Length × Width × Height (in)		305.9×88.2×110.9	323.3×88.4×122.9	357.6×88.0×138.2	357.6×88.0×138.2	382.7×88.0×156.3

\* The specifications provided are subject to change without notice and may vary according to modifications requested.

## Low Profile Pumping Units

### Effective Counter Balance (ECB) for FlexLift

	MODEL														
	F114-173-64			F160-173-74			F228-246-86			F320-246-86			F320-256-100		
Maximum stroke	64	54	44	74	64	54	86	74	62	86	74	62	100	86	74
Cranks only	2120	2513	3085	3388	3917	4643	4072	4732	5648	3932	4570	5454	4342	5049	5868
2 weights	4791	5678	6969	6059	6588	7314	8159	9482	11317	8019	9319	11123	8429	9801	11391
2 weights and 2 Aux. weights	5588	6623	8128	6856	7385	8111	9255	10756	12838	9115	10593	12643	9525	11076	12872
2 weights and 4 Aux. weights	6385	7567	9287	7653	8182	8908	10351	12030	14358	10211	11867	14164	10621	12350	14353
4 weights	7462	8844	10854	8730	9259	9985	12246	14232	16986	12106	14069	16792	12516	14553	16914
4 weights and 4 Aux. weights	9056	10852	13172	10324	10853	11579	14438	16779	20027	14298	16617	29833	14708	17102	19876
4 weights and 8 Aux. weights	10650	12368	15491	11918	12447	13173	16630	19327	23067	16490	19164	22873	16900	19651	22838



## Beam Balance Pumping Units

### Dimensions (inches)

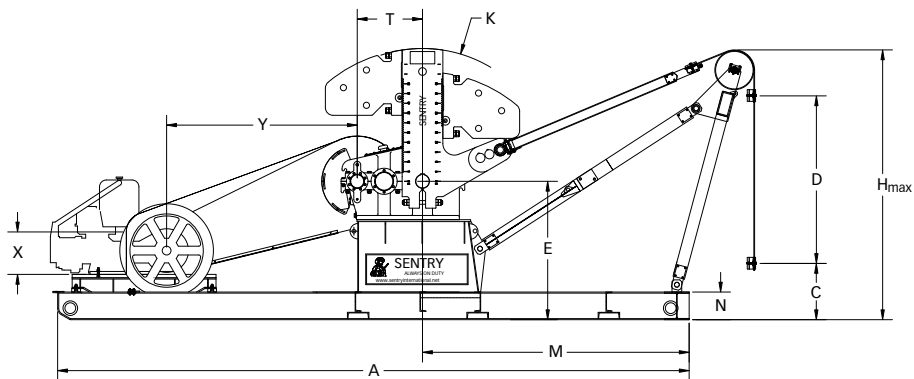
	A	B	C	D	E	F	H <sub>max</sub>	I
<b>MODEL</b>								
B25-67-36 (W)	26.66 / 32.66	38.26	93.4	28.2	53.26 / 47.26	112.2	151.8	11
B40-89-48 (W)	40.94	60.43	108.66	33.86	85.35	159.45	160.31	15.31
B57-109-54 (W)	45.28	66.93	115.75	36.22	72.83	162.60	172.68	9.06
B57-109-54 (S)	45.28	66.93	115.75	36.22	72.83	162.60	172.68	9.06
B80-133-54 (W)	45.28	66.93	115.75	36.22	72.83	162.60	172.68	9.06

1. W-wide skid base for gas and electric.  
2. S- for electric motor

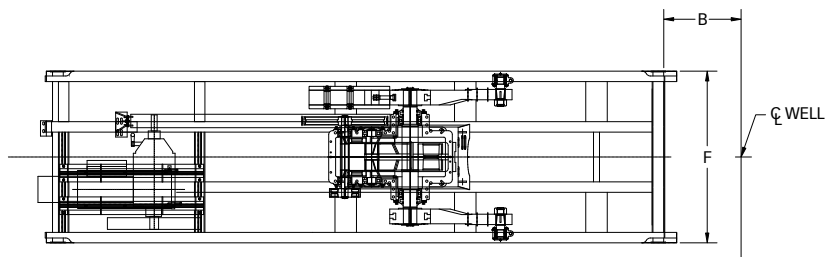
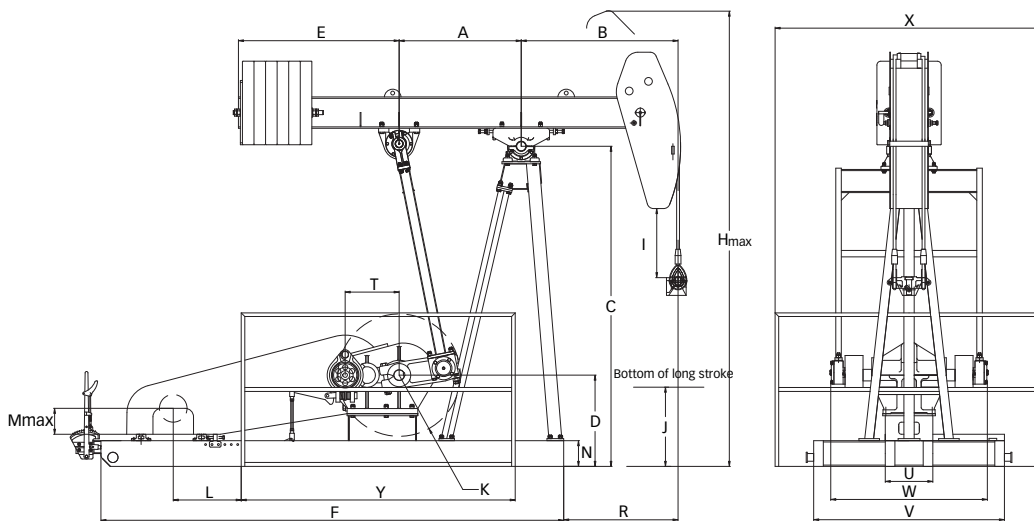
## Low Profile Pumping Units

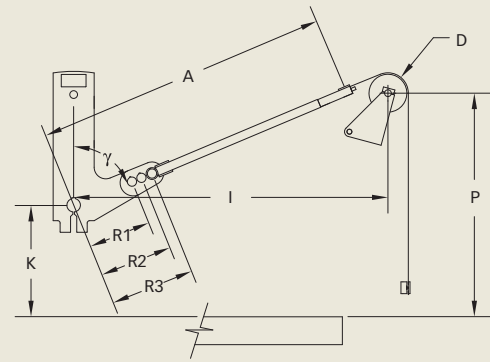
### Dimensions for FlexLift (inches)

	A	B	C	D	E	F	H <sub>max</sub>	K	M	N	X	Y	T
<b>MODEL</b>													
F114-173-64	277.56	28.35	25.67	64.02	58.19	83.86	110.87	55.12	104.06	14.17	94.72	36.02	25.59
F160-173-74	297.05	31.43	23.31	74.02	64.17	83.86	122.91	59.06	127.17	14.17	89.17	36.02	29.53
F228-246-86	323.82	37.36	27.01	85.98	70.87	88.03	138.23	68.11	136.61	14.17	99.8	36.02	33.46
F320-246-86	323.82	37.36	27.01	85.98	70.87	88.03	138.23	68.11	136.61	14.17	99.8	36.02	37.4
F320-256-100	344.29	42.06	31.14	100	78.98	88.03	156.3	75.98	156.54	14.17	96.42	36.02	37.4



J	K	L	M <sub>max</sub>	N	R	T	U	V	W	X	Y
41.9	8 / 12			8	32	16.54	11.8	46.5	58.27	74	61
44.13	20.47	33.82	16.06	8.66	48.23	17.72	16.93	61.97	52.28	90.35	81.89
42.52	22.44	35.79	19.69	11.02	53.15	19.69	17.32	61.97	52.28	90.35	81.89
42.52	22.44	35.79	19.69	11.02	53.15	19.69	17.32	35.43	52.28	90.35	81.89
42.52	22.44	35.79	19.69	11.02	53.15	19.69	17.32	61.97	52.28	90.35	81.89





## Low Profile Pumping Units

### API Geometry Dimensions

MODEL	D	P	I	A	K	R1	R2	R3	$\gamma$
<b>FLEXLIFT</b>									
F114-173-64	16.54	102.21	123.94	131.52	44.02	32	27	22	68
F160-173-74	16.54	114.27	144.93	153.35	50	37	32	27	68
F228-246-86	19.88	127.9	160.21	170.06	56.69	43	37	31	68
F320-256-86	19.88	127.9	160.21	170.06	56.69	43	37	31	68
F320-256-100	19.88	145.96	184.84	196.6	64.8	50	43	37	68